

*India's No. 1 Leading & Most Trusted Company for  
LED Module & LED Driver in Sign Industry.*



# Arihant

UNIGLOBE PVT. LTD.

Arihant LED®

Our Registered Brands



Authorised Distributor





# COMPANY INTRODUCTION

**ARIHANT UNIGLOBE PVT. LTD.** was originally founded in 1994 in Surat, Gujarat, India as Arihant Traders Started with Acrylic sheet, Flex banner, PVC Foam Sheet, ACP sheet & All types of Signage products. During its development and expansion, our company has been awarded numerous honors and been involved in various high profile events throughout the India.

**ARIHANT LED**® prides itself in our high quality, affordable, and energy efficient products. As we are most experienced & well reputed in sign industry, we find it imperative that we promote and provide ecofriendly and cost-efficient products to our clients. We have a wide range of clients, including private large corporates wishing to use **ARIHANT LED**® products in their signs.

**We proudly say that we have our own registered brands with ARIHANT LED**®, **ARIESLED**®, **GLOBELED**®, **UNIQLD**™, **ARESPOWER**® for Led Modules & Led Drivers.

Some of our most famous supplier partners includes Korean Company like **GOQ LED, UNION Elecom** & China's leading company like **RISHANG LED, SUNSIGN LED** etc.

Currently We have 11 offices & 10 distributors in all zone of India to provide fast & timely service.

The company is also very active to providing its products & services for corporate's PAN India Projects & Government signs projects.

Our customers rely on us because we firmly devoted and committed to providing good quality constantly. The satisfaction of our customers is our greatest priority.





# OUR PRESENCE



HEAD OFFICE - SURAT



AHMEDABAD



BANGLORE



CHENNAI



COCHIN



HYDERABAD



INDORE



KOLKATA



MUMBAI



NEW DELHI



PUNE

01	COMPANY INTRODUCTION
02	OUR PRESENCE
04	ARIHANTLED PREMIUM HL SERIES <b>Arihant LED</b> <sup>®</sup> Lit by <b>LUMILEDS PHILIPS</b>
05	ARIHANTLED PREMIUM HL SERIES <b>Arihant LED</b> <sup>®</sup> Lit by <b>SAMSUNG LED</b>
06	ARIHANTLED PREMIUM BL SERIES <b>Arihant LED</b> <sup>®</sup>
07	ARIHANTLED SL SERIES <b>ARIESLED</b> <sup>®</sup>
08	ARIHANTLED SL SERIES <b>ARIESLED</b> <sup>®</sup>
09	ARIHANTLED EL SERIES <b>UNIQLD</b> <sup>™</sup>
10	ARIHANTLED RIGID BAR SERIES <b>Arihant LED</b> <sup>®</sup>
11	ARIHANTLED ZIGZAG STRIP <b>ARIESLED</b> <sup>®</sup>
12	ARIHANTLED S-ZIGZAG STRIP <b>ARIESLED</b> <sup>®</sup>
13	ARIHANTLED FLEXIBLE STRIP <b>Arihant LED</b> <sup>®</sup>
14	GOQ PREMIUM SERIES (GENIUS, FROSTED & CLEAR LENS) <b>지오큐</b> <sup>®</sup>
15	SUNSIGN PREMIUM SERIES [GSB & LIGHT BOX] <b>SunsignLED</b>
16	SUNSIGN STANDARD SERIES <b>SunsignLED</b>
17	GOQ STANDARD SERIES <b>GLOBELED</b> <sup>®</sup> MADE IN KOREA
18	RISHANG STANDARD SERIES <b>RISHANG</b>
19	ARIHANTLED NEON FLEX <b>ARIESLED</b> <sup>®</sup>
20	DIGITAL & RGB LED STANDARD SERIES
21	PREMIUM LED DRIVER SERIES <b>UNION</b> ELECTRONICS CO. LTD.
22	ARIHANTLED PREMIUM DRIVER SERIES <b>Arihant LED</b> <sup>®</sup>
23	ARIHANTLED PREMIUM RAINPROOF SMPS <b>Arihant LED</b> <sup>®</sup>
24	ARIHANTLED INDOOR SLIM SMPS <b>ARIESPOWER</b> <sup>®</sup>
25	ARIHANTLED ADAPTOR & CONTROLLER SERIES
26	ARI-CAB WIRES & CABLES <b>ARIICAB</b> WIRES & CABLES
27	ARIHANT LED VIDEO WALL (INDOOR) <b>Arihant LED</b> <sup>®</sup>
28	ARIHANT LED VIDEO WALL (OUTDOOR) <b>Arihant LED</b> <sup>®</sup>
29	ARIHANTLED ALLUMINIUM CHANNEL ROLL
30	COMPANY EXHIBITIONS

# ARIHANTLED PREMIUM HL SERIES

**Arihant LED**<sup>®</sup>

Lit by **LUMILEDS**  
**PHILIPS**



## FEATURES :

- Most Preferred Best Seller LED module : CE, RoHS, LM-79 by Intertek Certified
  - LED Provided by LUMILED (LED : 2835 Type)
  - SMD LED mounted : Made in India
  - Max 20 modules in series
  - LED Driver : Constant Voltage Driving System
  - Fabricated with a Wide Angle Optical Lens
- Application : Narrow & Big Size Channel Letters

IS 16103:2012  
(Part-1/Sec-7)



R-72008060

## TECHNICAL SPECIFICATION

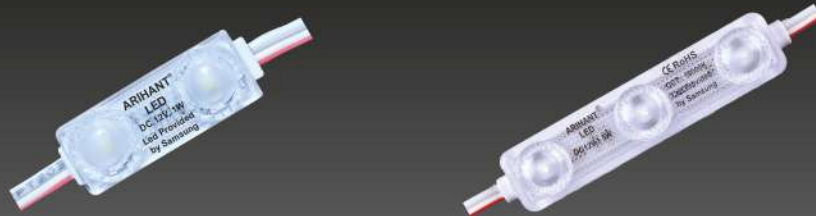
Model	ARI-LM-MN-24-0.48W	ARI-LM-BL-3-24-0.72W	ARI-LM-BL-24-1.2W
LED (Chip)	LUMILED	LUMILED	LUMILED
Color (CCT)	3000K / 4000K / 6500K / 10000K	3000K / 4000K / 6500K / 10000K	3000K / 4000K / 6500K / 10000K
Operating Power	DC 24V	DC 24V	DC 24V
Power Dissipation	0.48W	0.72W	1.2W
Luminous Flux (lm)	70 lm	135 lm	180 lm
CRI	85 %	85 %	85 %
View Angle	160°	180°	180°
Dimension (mm)	26.5*9*8.5	72*15*11	70*15*11
Operating Temperature	-30 ~ 70	-30 ~ 70	-30 ~ 70
Max Series Connection	50 Modules	20 Modules	20 Modules
Waterproof	IP 67	IP 67	IP 67
Warranty	5 Years	5 Years	5 Years

intertek LM79 CE **RoHS** (CQC) SMD (IP67) (24V) (12V) (5 Yr.)

# ARIHANTLED PREMIUM HL SERIES

**Arihant LED**®

Lit by **SAMSUNGLED**



## FEATURES :

- Most Preferred Best Seller LED module : CE, RoHS, LM-79 by Intertek Certified
  - LED Provided by SAMSUNG (LED : 2835 Type)
  - SMD LED mounted : Made in India
  - Max 20 modules in series
  - LED Driver : Constant Voltage Driving System
  - Fabricated with a Wide Angle Optical Lens
- Application : Narrow & Big Size Channel Letters

IS 16103:2012  
(Part-1/Sec-7)



R-72008060

## TECHNICAL SPECIFICATION

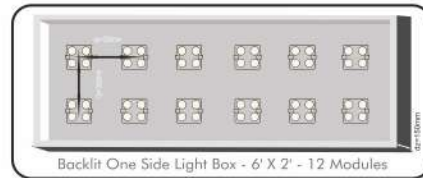
Model	ARI-SM-2-12-1W	ARI-SM-3-12-1.5W
LED (Chip)	SAMSUNG	SAMSUNG
Color (CCT)	3000K / 4000K / 6500K / 10000K	3000K / 4000K / 6500K / 10000K
Operating Power	DC 12V	DC 12V
Power Dissipation	1W	1.5W
Luminous Flux (lm)	80 lm	160 lm
CRI	83 %	83 %
View Angle	175°	175°
Dimension (mm)	34*12*9	72*15*11
Operating Temperature	-30 ~ 70	-30 ~ 70
Max Series Connection	20 Modules	20 Modules
Waterproof	IP 67	IP 67
Warranty	5 Years	5 Years

intertek LM79 CE **RoHS** CQC SMD IP67 12V 5 Yr.



## FEATURES :

- Constant Current Technology, LM-79 by Intertek Certified
  - Injection Molding Process with Opti Lens
  - High Efficiency Chip, High Brightness and Reliability
  - Energy Saving, Environment Friendly
  - LED Driver : Constant Voltage Driving System
  - Fabricated with a Wide Angle Optical Lens
- Application : Big Size Channel Letters, Light Box & Glow Sign Board



IS 16103:2012  
(Part-1/Sec-7)



R-72008060

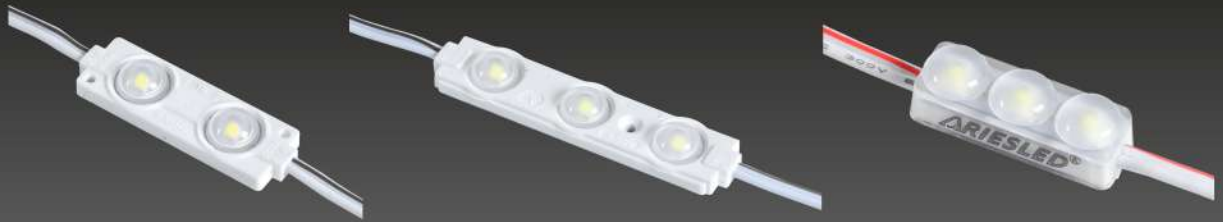
## TECHNICAL SPECIFICATION

Model	ARI-UG-BL-1-10-12-2.5W	ARI-UG-BL-1-10-AC230-2.5W	ARI-CC-BL-3-12-1.8W	ARI-CC-BL-4-10-12-3W
Product Type	Opti Lens	Opti Lens	Crystal Lens	Crystal Lens
LED (Chip)	TAIWAN	TAIWAN	TAIWAN	TAIWAN
Color	3000K / 10000K	3000K / 10000K	3000K / 10000K / RED	6500K / 10000K
Operating Power	DC 12V	AC 230V	DC 12V	DC 12V
Power Dissipation	2.5W	2.5W	1.8W	3W
Luminous Flux (lm)	290 lm	290 lm	180 lm	316 lm
View Angle	150°	150°	175°	175°
Dimension (mm)	40*45*8	40*45*8	88*19*6	55*55*6
Operating Temperature	-20 ~ 60	-20 ~ 60	-20 ~ 60	-20 ~ 60
Max Series Connection	12 Modules	12 Modules	20 Modules	20 Modules
Waterproof	IP 67	IP 67	IP 67	IP 67
Warranty	3 Years	2 Years	5 Years	5 Years



# ARIHANT LED SL SERIES

## ARIESLED®



### FEATURES :

- Constant Voltage Technology
  - Injection Molding Process with Opti Lens
  - High Efficiency Chip, High Brightness and Reliability
  - Energy Saving, Environment Friendly
- Application : Narrow & Big Size Channel Letters, Light Box

IS 10322:2017  
(Part-5/Sec-7)



R-41127388

### TECHNICAL SPECIFICATION

Product Name	ARI-PR-2-12-1W	ARI-PR-3-12-1.5W	ARI-PR-MN-3-12-0.72W
Product Type	Opti Lens	Opti Lens	Opti Lens
LED (Chip)	Taiwan Chip	Taiwan Chip	Taiwan Chip
Color	○ ○ ● ● ● ●	○ ○ ● ● ● ●	○ ○ ●
Operating Power	DC 12V	DC 12V	DC 12V
Power Dissipation	1W / 0.72W	1.5W / 1W	0.7W / 0.4W
Luminous Flux (lm)	70 lm	125 lm	60 lm
View Angle	160°	160°	160°
Dimension (mm)	47*15*7.5	68*15*7.5	27*9*8
Operating Temperature	-20 ~ 60	-20 ~ 60	-20 ~ 60
Max Series Connection	20 Modules	20 Modules	50 Modules
Waterproof	IP 65	IP 65	IP 65
Warranty	3 Years	3 Years	3 Years

# ARIESLED®



## FEATURES :

- Constant Voltage Technology
  - Injection Molding Process with Opti Lens
  - High Efficiency Chip, High Brightness and Reliability
  - Energy Saving, Environment Friendly
- Application : Narrow & Big Size Channel Letters, Light Box

IS 16103:2012  
(Part-1/Sec-7)



R-72008117

## TECHNICAL SPECIFICATION

Product Name	ARI-ECO-MN-3-12-0.72W	ARI-ECO-2-12-1W	ARI-ECO-3-12-1.5W
LED (Chip)	SANAN	SANAN	SANAN
Color	○ ○ ●	○ ○ ● ● ● ● ●	○ ○ ● ● ● ● ●
Operating Power	DC 12V	DC 12V	DC 12V
Power Dissipation	0.72W	1W	1.5W
Luminous Flux (lm)	60 lm	80 lm	145 lm
View Angle	160°	160°	160°
Dimension (mm)	29*9*8	47*15*7.5	72*15*8
Operating Temperature	-20 ~ 60	-20 ~ 60	-20 ~ 60
Max Series Connection	20 Modules	20 Modules	20 Modules
Waterproof	IP 67	IP 67	IP 67
Warranty	3 Years	3 Years	3 Years

intertek LM79 CQC SMD IP67 12V 3 Yr.

# UNI<sup>TM</sup>QLED



## FEATURES :

- Constant Voltage Technology
  - Injection Molding Process with Opti Lens
  - High Brightness and Reliability
  - Energy Saving, Environment Friendly
- Application : Narrow & Big Size Channel Letters, Light Box

IS 16103:2012  
(Part-1/Sec-7)



R-72008117

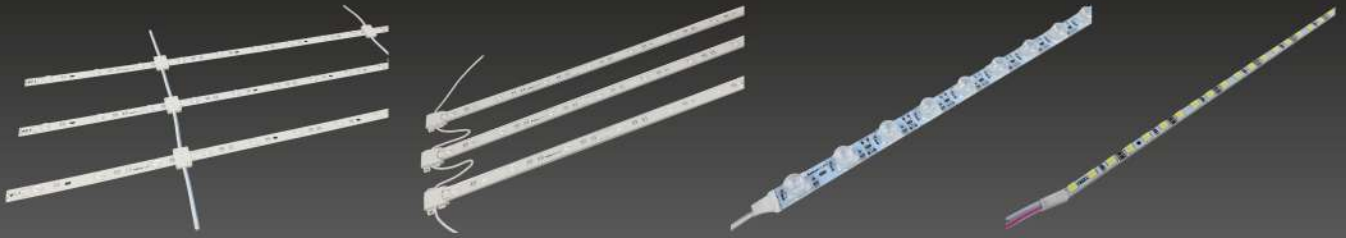
## TECHNICAL SPECIFICATION

Product Name	ARI -UNQ-3-12-12-1.5W	ARI -UNQ-3-30-12-1.5W	ARI -UNQ-3-RD-12-1.5W
Product Type	Opti Lens	Opti Lens	Opti Lens
LED (Chip)	Runlite	Runlite	Runlite
Color	10000k	3000K	RED
Operating Power	DC 12V	DC 12V	DC 12V
Power Dissipation	1.5W	1.5W	1.5W
Luminous Flux (lm)	130 lm	130 lm	620~625 nm
View Angle	160°	160°	160°
Dimension (mm)	62*12*7	62*12*7	62*12*7
Operating Temperature	-20 ~ 50	-20 ~ 50	-20 ~ 50
Max Series Connection	20 Modules	20 Modules	20 Modules
Waterproof	IP 65	IP 65	IP 65
Warranty	1 Years	1 Years	1 Years



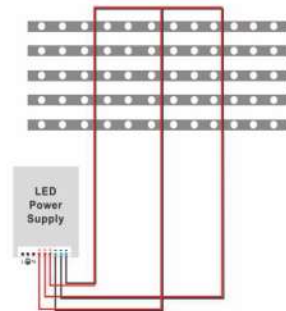
# ARIHANT LED RIGID BAR SERIES

**Arihant LED**®



## FEATURES :

- Low power consumption, Long life, Maintenance free
- High CRI, No Glare, No Inflation, High Brightness and Reliability
- Energy Saving, Environment Friendly
- LED Driver : Constant Voltage Driving System
- Duel Chip, Double Resistance, Prolong Lifetime,
- Application : Suitable for Subways, Airports, Bus stations and Backlight Board



IS 10322:2017  
(Part-5/Sec-7)



R-41131849

## TECHNICAL SPECIFICATION

Model	ARI-RB-BL-12-14W	ARI-RB-EDGE-12-27W	ARI-RB-SS-4-12-15W
LED (Chip)	SANAN	SANAN	SANAN
Color	3000 / 4000 / 6500 / 10000 K	3000 / 4000 / 6500 / 10000 K	3000 / 4000 / 6500 / 10000 K
Operating Power	DC 12V	DC 12V	DC 12V
LED / Mtr.	12 Leds / Mtr.	18 Leds / Mtr.	120 Leds / Mtr.
Power Dissipation	14.4 W / Mtr.	27 W / Mtr.	15 W / Mtr.
Luminous Flux (lm)	1320 lm / Mtr.	2340 lm / Mtr.	1500 lm / Mtr.
View Angle	175°	15°45°	120°
Dimension (mm)	950*17*1	990*25*1.45	1000*4*1.6
Operating Temperature	-20 ~ 60	-20 ~ 70	-20 ~ 70
Max Series Connection	10 LED Bars	Single	Single
Waterproof	IP 20 / IP 67	IP 20 / IP67	IP 20
Warranty	3 Years	3 Years	3 Years

## ARIESLED®



### FEATURES :

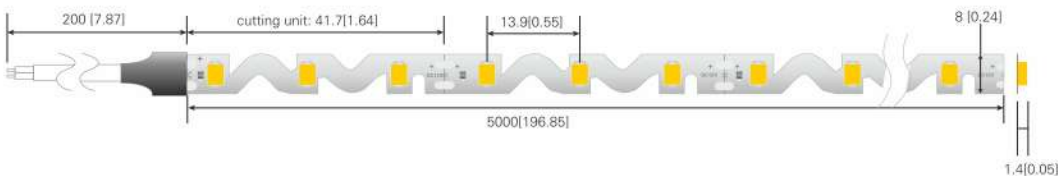
- 2835 SMD LED with long lifespan, low attenuation and high efficiency
  - V type structure, can be bent and shaped arbitrarily.
  - Adopt 3M Back adhesive
  - White FPC board, ensuring excellent effect.
- Application : Suitable for 3-6cm depth signage lighting, small channel letter, abnormal shaped channel letter.

IS 16103:2012  
(Part-1/Sec-7)



R-41116122

### PROFILE DRAWINGS (Unit: mm[inch])



### TECHNICAL SPECIFICATION

Model	Size (mm)	LEDs (LEDs/mtr.)	Input Voltage (V)	Power (W/m)	CRI	Color Temp. (K)	Lumi. Flux (lm/m)	Lumi. Efficiency (lm/W)	IP GRADE
ARI-ZG-6-72-30-12-7.2W	5000X6X1.4	72	DC 12V	7.2 W	>=80	3000K	546.3	84	IP 20
ARI-ZG-6-72-40-12-7.2W	5000X6X1.4	72	DC 12V	7.2 W	>=80	4000K	570.6	88	IP 20
ARI-ZG-6-72-65-12-7.2W	5000X6X1.4	72	DC 12V	7.2 W	>=80	6500K	570.6	88	IP 20
ARI-ZG-6-72-10-12-7.2W	5000X6X1.4	72	DC 12V	7.2 W	>=80	10000K	583.2	90	IP 20
ARI-ZG-6-72-RD-12-7.2W	5000X6X1.4	72	DC 12V	6.3 W	>=80	620~625nm	108	20	IP 20
ARI-ZG-WP-6-72-30-12-7.2W	5000X6X1.5	72	DC 12V	7 W	>=80	3000K	546.3	90	IP 64
ARI-ZG-WP-6-72-10-12-7.2W	5000X6X1.5	72	DC 12V	7 W	>=80	10000K	546.3	90	IP 64

ERP LM-80  **RoHS**  STRIP    

# ARIESLED®



## FEATURES :

- 2835 SMD LED with long lifespan, low attenuation and high efficiency
- S type structure, can be bent and shaped arbitrarily.
- Adopt 3M Back adhesive
- White FPC board, ensuring excellent effect.
- Application : Suitable for 3-6cm depth signage lighting, small channel letter, abnormal shaped channel letter.

IS 16103:2012  
(Part-1/Sec-7)



R-41116122

## TECHNICAL SPECIFICATION

Model	Size (mm)	LEDs (LEDs/mtr.)	Input Voltage (V)	Power (W/m)	CRI	Color Temp. (K)	Lumi. Flux (lm/m)	Lumi. Efficiency (lm/W)	IP GRADE
ARI-S-ZG-6-42-10-12-4.5W	50 MTR X6X1.4	42	DC 12V	7.2 W	>=80	10000K	700	85	IP 20
ARI-S-ZG-6-42-30-12-4.5W	50 MTR X6X1.4	42	DC 12V	7.2 W	>=80	3000K	700	85	IP 20
ARI-S-ZG-6-60-10-12-6W	50 MTR X6X1.4	60	DC 12V	7.2 W	>=80	10000K	700	85	IP 20
ARI-S-ZG-6-60-30-12-6W	50 MTR X6X1.4	60	DC 12V	7.2 W	>=80	3000K	700	85	IP 20
ARI-S-ZG-6-60-RD-12-6W	50 MTR X6X1.4	60	DC 12V	6.3 W	>=80	● 620-625nm	108	85	IP 20
ARI-S-ZG-6-120-10-12-7.2W	50 MTR X6X1.4	120	DC 12V	7.2 W	>=80	10000K	700	85	IP 20
ARI-S-ZG-6-120-30-12-7.2W	50 MTR X6X1.4	120	DC 12V	7.2 W	>=80	3000K	700	85	IP 20

\*other colors available upon request

ERP LM-80 CE **RoHS** (CQC) STRIP IP20 12V 2 Yr.



### FEATURES :

- 2835 SMD LED with long lifespan, low attenuation and high efficiency
  - Pure copper FPC, Jointless PCB.
  - "U" shape solder pad design, Easy to soldering, Firm joints and no solder false.
  - Ensuring excellent effect.
- Application : Cove lighting, Profile lighting, Props lighting, Fixture, Retail Outlets etc.

IS 10322:2017  
(Part-5/Sec-7)



R-72008117

### TECHNICAL SPECIFICATION

Model	Size (mm)	LEDs (LEDs/mtr.)	Input Voltate (V)	Power (W/m)	CRI	Color Temp. (K)	Lumi. Flux (lm/m)	Lumi. Efficiency (lm/W)	IP GRADE
ARI-FS-5-120-10-12-14W	5000X5X2	120	DC 12V	14 W	>=80	10000K	1890	104	IP 20
ARI-FS-8-120-10-12-14W	5000X8X2	120	DC 12V	14 W	>=80	10000K	1890	104	IP 20
ARI-FS-8-120-65-12-14W	5000X8X2	120	DC 12V	14 W	>=80	6500K	1890	104	IP 20
ARI-FS-8-120-40-12-14W	5000X8X2	120	DC 12V	14 W	>=80	4000K	1890	104	IP 20
ARI-FS-8-120-30-12-14W	5000X8X2	120	DC 12V	14 W	>=80	3000K	1890	104	IP 20
ARI-FS-8-120-RD-12-14W	5000X8X2	120	DC 12V	14 W	>=80	RED			IP 20
ARI-FS-8-120-GRN-12-14W	5000X8X2	120	DC 12V	14 W	>=80	GREEN			IP 20
ARI-FS-8-120-BLU-12-14W	5000X8X2	120	DC 12V	14 W	>=80	BLUE			IP 20
ARI-FS-10-240-10-12-24W	5000X9.6X2	240	DC 12V	24 W	>=80	10000K	2679	89	IP 20

\*other colors available upon request

LM-79 LM-80 CE **RoHS** CQC STRIP IP20 12V 3 Yr.



# GOQ PREMIUM SERIES (GENIUS, FROSTED & CLEAR LENS)



: POWERED BY :  
**SAMSUNG LED**



## FEATURES :

- Most Preferred Best Seller LED module : KS, CE, UL, RoHS Certified
  - LED Provided by SAMSUNG (LED : 2835/3030 Type)
  - SMD LED mounted : Made in Korea
  - Max 50 modules in series
  - LED Driver : Constant Voltage Driving System
  - Fabricated with a Wide Angle Optical Lens
- Application : Narrow & Big Size Channel Letters

IS 10322:2017  
(Part-5/Sec-7)



R-41116734

## TECHNICAL SPECIFICATION

Model	GOQ-GNS-SM-2-12-0.72W	GOQ-GNS-SM-3-12-1.08W	GOQ-FRS-SM-3-12-1.2W	GOQ-CLR-SM-3-12-1.2W
LED (Chip)	SAMSUNG	SAMSUNG	SAMSUNG	SAMSUNG / SEOUL LED
Color (CCT)	10000K	3000K/4000K/6500K/10000K	10000K	10000K / RED / BLUE
Operating Power	DC 12V	DC 12V	DC 12V	DC 12V
Power Dissipation	0.72W	1.08W	1.2W	1.2W / 0.72W
Luminous Flux (lm)	70 lm	90 lm	100 lm	100 lm / -
CRI	83 %	83 %	80 %	80 %
View Angle	175°	175°	140°	140°
Dimension (mm)	34*12*9	66*15*10.5	66*15*10.5	66*15*9
Operating Temperature	-30 ~ 70	-30 ~ 70	-20 ~ 70	-20 ~ 70
Max Series Connection	50 Modules	50 Modules	50 Modules	50 Modules
Waterproof	IP 67	IP 67	IP 67	IP 67
Warranty	5 Years	5 Years	5 Years	5/3 Years

# SUNSIGN PREMIUM SERIES

Light up your brand  
**SunsignLED**

IS 10322:2017  
(Part-5/Sec-7)



R-41115231

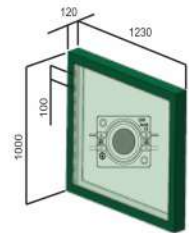


## FEATURES :

- Constant Current Technology
- Injection Molding Process with Opti Lens
- High Efficiency Chip, High Brightness and Reliability
- Energy Saving, Environment Friendly
- LED Driver : Constant Voltage Driving System
- Fabricated with a Wide Angle Optical Lens



Backlit One Side Light Box - 6' X 2' - 12 Modules



Double Side Light Box Edge Module

- Application : Big Size Channel Letters, Light Box & Glow Sign Board  
Single and Double Side Light Box, Commercial Standing Lighting

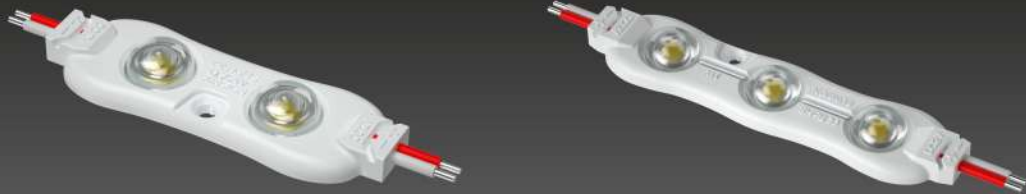
## TECHNICAL SPECIFICATION

Model	SS-CC-2-10-12-1.2W	SS-CC-3-12-1.8W	SS-CC-4-12-3W	SS-CC-EDGE-1-65-12-1.5W
Product Type	Crystal Lens	Crystal Lens	Crystal Lens	Edgelit Module
LED (Chip)	TAIWAN	TAIWAN	TAIWAN	Taiwan Chip
Color	10000K	10000K / 3000K / RED	10000K / 6500K / 3000K	6500K
Operating Power	DC 12V	DC 12V	DC 12V	DC 12V
Power Dissipation	1.2W	1.8W / 1.5W	3W	1.5W
Luminous Flux (lm)	100 lm	160 lm	260 lm	125 lm
View Angle	165°	165°	165°	15°55°
Dimension (mm)	60*18*6	84*19*6	54*54*6	40*35*13
Operating Temperature	-20 ~ 60	-20 ~ 60	-20 ~ 60	-20 ~ 70
Max Series Connection	30 Modules	25 Modules	20 Modules	30 Modules
Waterproof	IP 67	IP 67	IP 67	IP 67
Warranty	5 Years	5 Years	5 Years	5 Years



# SUNSIGN STANDARD SERIES

Light up your brand  
**SunsignLED**



## FEATURES :

- Constant Voltage Technology
  - Injection Molding Process with Opti Lens
  - High Efficiency Chip, High Brightness and Reliability
  - Energy Saving, Environment Friendly
- Application : Narrow and Big Size Channel Letters, Light Box

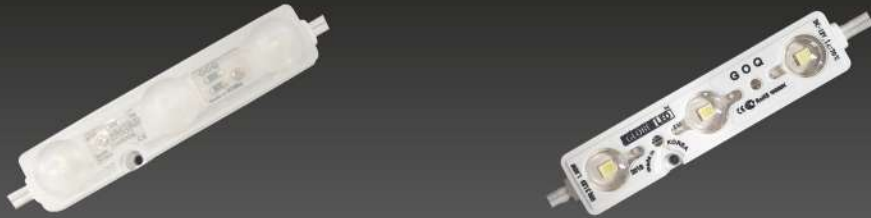
IS 10322:2017  
(Part-5/Sec-7)



R-41115231

## TECHNICAL SPECIFICATION

Product Name	SS-ECO-2-12-1W	SS-ECO-3-12-1.5W
Product Type	Opti Lens	Opti Lens
LED (Chip)	Taiwan Chip	Taiwan Chip
Color	10000K / 3000K / RED	10000K / 3000K / RED
Operating Power	DC 12V	DC 12V
Power Dissipation	1W / 0.72W	1.5W / 1W
Luminous Flux (lm)	90 lm	135 lm
View Angle	160°	160°
Dimension (mm)	56*18*5	75*16*5
Operating Temperature	-20 ~ 70	-20 ~ 70
Max Series Connection	20 Modules	20 Modules
Waterproof	IP 67	IP 67
Warranty	<b>3 Years</b>	<b>3 Years</b>



## FEATURES :

- Most Preferred Best Seller LED module : CE, RoHS Certified
  - LED Provided by Lumi Micro (LED : 2835 Type)
  - SMD LED mounted : Made in Korea
  - Max 50 modules in series
  - LED Driver : Constant Voltage Driving System
  - Design of a CAP TYPE Optical Lens
- Application : Narrow and Big Size Channel Letters, Light Box

IS 10322:2017  
(Part-5/Sec-7)



R-41116734

## TECHNICAL SPECIFICATION

Product Name	GOQ-GLB-FRS-3-12-1.2W	GOQ-GLB-CLR-3-12-1.2W
LED (Chip)	Korean Chip	Korean Chip
Color	10000K / 3000K	10000K
Operating Power	DC 12V	DC 12V
Power Dissipation	1.2W	1.2W
Luminous Flux (lm)	100 lm	100 lm
View Angle	140°	140°
Dimension (mm)	66*15*9	66*15*9
Operating Temperature	-20 ~ 70	-20 ~ 70
Max Series Connection	50 Modules	50 Modules
Waterproof	IP 67	IP 67
Warranty	<b>3 Years</b>	<b>3 Years</b>



# RISHANG STANDARD SERIES



## FEATURES :

- Injection Molding Process with Opti Lens
- High Efficiency Chip with low attenuation and long life
- Energy Saving, Environment Friendly
- LED Driver : Constant Voltage Driving System
- Application : Narrow & Big Size Channel Letters & Light Box

IS 10322:2017  
(Part-5/Sec-7)



R-41114790

## TECHNICAL SPECIFICATION

Model	RS-MN-3-12-0.33W	RS-2-12-0.72W	RS-3-12-1.2W
LED (Chip)	Sanan Chip	Sanan Chip	Sanan Chip
Color	10000K / 3000K / RED	10000K / 3000K / RED	10000K / 3000K / RED
Operating Power	DC 12V	DC 12V	DC 12V
Power Dissipation	0.33W	0.72W	1.2W / 0.72W
Luminous Flux (lm)	28 lm	60 lm	105 lm
View Angle	120°	160°	160°
Dimension (mm)	48*13*5	43*15*5	65*15*5
Operating Temperature	-20 ~ 70	-20 ~ 70	-20 ~ 70
Max Series Connection	20 Modules	20 Modules	20 Modules
Waterproof	IP 67	IP 67	IP 67
Warranty	3 Years	3 Years	3 Years



# ARIHANT LED NEON FLEX

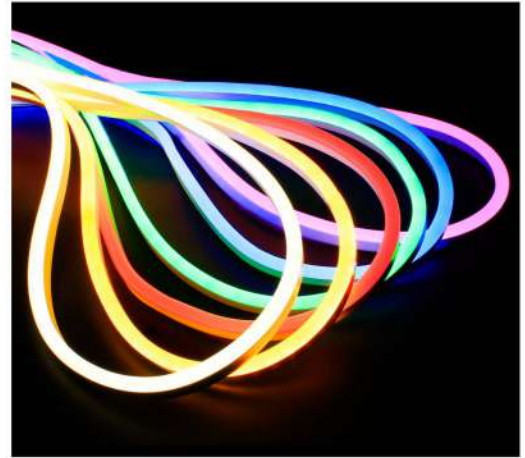
## ARIESLED®

### FEATURES :

- Super bright 840 ~ 960 Lm/m, 7W/m.
- Uniform color, even light, nice looking.
- High efficiency, low light decay, long lifespan.
- Low input voltage DC 12V, safe to human body.
- Card slot to easy for DIY installation.
- CE & RoHS compliant.
- 5m & 50m per Roll, Every 25mm Cuttable.
- Warranty : 1 year

### Application :

Indoor illumination and decoration in home, hotel, shopping mall, cinema, museum, bar, showroom. jewelry counter etc.



IS 10322:2017  
(Part-5/Sec-7)



R-41127388



### TECHNICAL SPECIFICATION

Model No.	Color	CCT/NM	Luminous	Output	Power	LEDs/m	IP Grade
ARI-NEON-612-50-10-12-7W	Cool White	10000K	840-960lm	DC 12V	7W/m	120 pcs/m	IP67
ARI-NEON-612-50-30-12-7W	Warm White	3000K	840-960lm	DC 12V	7W/m	120 pcs/m	IP67
ARI-NEON-612-50-RD-12-7W	Red	620-625nm	180-450lm	DC 12V	7W/m	120 pcs/m	IP67
ARI-NEON-612-50-PNK-12-7W	Pink	585-590nm	180-450lm	DC 12V	7W/m	120 pcs/m	IP67
ARI-NEON-612-50-GRN-12-7W	Green	520-525nm	630-710lm	DC 12V	7W/m	120 pcs/m	IP67
ARI-NEON-612-50-BLU-12-7W	Dark Blue	460-465nm	450-630lm	DC 12V	7W/m	120 pcs/m	IP67
ARI-NEON-612-50-SBLU-12-7W	Sky Blue	490-495 nm	450-630lm	DC 12V	7W/m	120 pcs/m	IP67
ARI-NEON-612-50-ORG-12-7W	Orange	600-610 nm	450-630lm	DC 12V	7W/m	120 pcs/m	IP67
ARI-NEON-612-50-YLW-12-7W	Yellow	585-590nm	180-450lm	DC 12V	7W/m	120 pcs/m	IP67

**RoHS CB CE IP67 1 Yr.**

Light up your brand  
**SunsignLED**



**RISHANG**

IS 10322:2017  
(Part-5/Sec-7)



R-41115231



## FEATURES :

- Low power consumption, Long life, Maintenance free
- RGB 5050 SMD LED mounted.
- Energy Saving, Environment Friendly
- LED Driver : Constant Voltage Driving System

- Application : Suitable for Channel Letter, Metal Letter and so on.

## FEATURES :

- The shell is made by eco-friendly pigment and Transparent plastic material mixing.
- Adopt DIP TOP LEDs.

- Application : Suitable for Exposed signboards and perforated channel letters.

## TECHNICAL SPECIFICATION

Model	SS-RGB-3-12-0.72W	SS-DGT-3-12-0.72W	RISHANG OPEN LED	ARI-DGT-12MM-12-0.3W
LED (Chip)	Taiwan Chip	Taiwan Chip	Rishang	Taiwan Chip
Color	RGB 7 Colors	Full Color	○ ○ ● ● ● ● ●	Full Color
Operating Power	DC 12V	DC 12V	DC 12V	DC 5V
Power Dissipation	0.72W	0.72W	0.18W	0.3W
View Angle	120°	120°	120°	120°
Dimension (mm)	74*12*6	74*12*6	9mm / 12mm	12mm
Operating Temperature	-20 ~ 70	-20 ~ 70	-20 ~ 60	-20 ~ 60
Max Series Connection	20 Modules	20 Modules	50 Pcs.	50 Pcs.
Waterproof	IP 67	IP 67	IP 65	IP 65
Warranty	2 Years	1 Years	2 Years	1 Year

# PREMIUM LED DRIVER SERIES

**UNION**  
ELECOM CO. LTD.  
MADE IN KOREA

**WATER  
PROOF**



## FEATURES :

- **Constant Voltage Design**
- Protections : Overload/Over voltage/Short circuit/Over Temperature
- Cooling by free air convection
- **IP67(30~60W) & IP68(100~400W) for outdoor installations**
- 100% full load burn-in test
- **Suitable for LED lighting and moving sign applications**
- **Plastic case : 30~100W / Metal case : 100~400W**
- **5 Years Warranty**

IS 15885:2012  
(Part-2/Sec-13)



R-41028304

## TECHNICAL DETAIL

- AC input voltage range : **90-277VAC I 160-277VAC**
- DC adjustment range : Fixed can be modified within
- $\pm 5\%$  rated output voltage (but do not use over the rated Power)
- Over load protection : over 110% of rating, auto-recovery
- With Standing voltage
- I-O : 3KVAC, I-FG : 1.5KVAC, O-FG : 0.5KVAC, 1 minute
- Isolation resistance
- I-O, I-FG, O-FG : 100 M ohms/500VDC
- Working temperature :  $-30\sim +60^{\circ}\text{C}$  (refer to output derating curve)
- Safety standards : EN61347-1, EN61347-2-13 / K61347-2-13
- EMC standards : EN61204-3, EN61000-3-2,3 (except for 40~60W)
- K00015, K61547, K61000-4-2,3,4,5,6,11

## TECHNICAL SPECIFICATION

Model No.	Input Voltage	Output Voltage	Max. Power to Use	Output Current	Dimension (mm)	Efficiency
UP-30-12-WP	AC90~277V	12V	30W	2.50A (2.49A@50°C)	193*28*19	83%
UP-60-12-WP	AC90~277V	12V	60W	5A (5A@50°C)	171*43*38	84%
UP-100-12-WP	AC160~277V	12V	100W	8.33A (8.3A@50°C)	203*48*37	85%
UP-150-12-WP	AC160~277V	12V	150W	12.5A (11A@50°C)	218*56*37	86%
UP-200-12-WP	AC160~277V	12V	200W	16.6A (16.6A@50°C)	233*62*37	88%
UP-300-12-WP	AC160~277V	12V	300W	25A (20.7A@50°C)	278*62*37	88%
UP-400-12-WP	AC160~277V	12V	400W	33.33A (26.66A@50°C)	222*74*49	88%



# ARIHANT LED®

# WATER PROOF



## FEATURES :

- **Constant Voltage Design**
- Protections : Overload/Over voltage/ Short circuit/Over Temperature
- Cooling by free air convection
- **IP68(30~400W) for outdoor installations**
- 100% full load burn-in test
- **Suitable for LED lighting and moving sign applications**
- **Metal case : DC 12V / 30~400W**
- **Metal case : DC 24V / 100~300W**
- **3 Years Warranty**

## TECHNICAL DETAIL

- AC input voltage range : **180-264VAC**
- DC adjustment range : Fixed can be modified within
- $\pm 5\%$  rated output voltage (but do not use over the rated Power)
- Over load protection : over 110% of rating, auto-recovery
- With Standing voltage
- I-O : 3KVAC, I-FG : 1.5KVAC, O-FG : 0.5KVAC, 1 minute
- Isolation resistance
- I-O, I-FG, O-FG : 100 M ohms/500VDC
- Working temperature : -30~+60°C (refer to output derating curve)
- Safety standards : EN61347-1, EN61347-2-13 / K61347-2-13
- EMC standards : EN61204-3, EN61000-3-2,3 (except for 40~60W)
- K00015,K61547,K61000-4-2,3,4,5,6,11

IS 15885:2012  
(Part-2/Sec-13)



R-

## TECHNICAL SPECIFICATION

Model No.	Input Voltage	Output Voltage	Max. Power to Use	Output Current	Dimension (mm)	Efficiency
ARI-30-12WP	AC180~264V	12V	30 W	2.5A (2.5A@50°C)	120*40*25	91%
ARI-60-12WP	AC180~264V	12V	60 W	5A (5A@50°C)	155*40*25	91%
ARI-100-12WP	AC180~264V	12V	100 W	8.3A (8.3A@50°C)	193*40*25	91%
ARI-150-12WP	AC180~264V	12V	150 W	12.5A (12.5A@50°C)	159*56*37	91%
ARI-200-12WP	AC180~264V	12V	200 W	16.6A (13.3A@50°C)	172*56*37	91%
ARI-300-12WP	AC180~264V	12V	300 W	25A (18.8A@50°C)	198*66*47	91%
ARI-400-12WP	AC180~264V	12V	400 W	33A (25A@50°C)	225*75*50	91%
ARI-100-24WP	AC180~264V	24V	100 W	4.16A (3.12A@50°C)	193*40*25	91%
ARI-150-24WP	AC180~264V	24V	150 W	6.25A (4.69A@50°C)	159*56*37	91%
ARI-200-24WP	AC180~264V	24V	200 W	8.33A (6.23A@50°C)	172*56*37	91%
ARI-300-24WP	AC180~264V	24V	300 W	12.5A (9.4A@50°C)	198*66*47	91%

# ARIHANT LED PREMIUM RAINPROOF SMPS

**Arihant LED**®



## FEATURES :

- **Constant Voltage Design**
- Accord with **IP43 (60W to 400W)** for Indoor and Outdoor Installation
- **Suitable for LED lighting and moving sign applications**
- Aluminum Extrusion Case, Excellent heat-dissipating, High reliability.
- Protections: Over Load / Short circuit / Over Temperature
- 100% full load burn-in test
- **3 years warranty**

## TECHNICAL DETAIL

- AC input voltage range: **176-264VAC**
- Input frequency: 47-63Hz
- AC inrush current: Cold start, 60A / 230VAC
- Line regulation ( full load ) : \*2%
- Output over load protection: Hiccup mode, auto-recovery
- Working temperature: -20~+60°C
- Storage temperature: +40~85°C
- Safety standards: GB4943. EN60950-1
- EMC standards: GB9254. EN55022 class A
- Cooling method: Built-in fan cooling

IS 13252:2010  
(Part-1/Sec-13)



R-41259675

## TECHNICAL SPECIFICATION

Model No.	Input Voltage	Output Current	Dimension (mm)
ARI-PR-RP-12-60	AC 176 - 264V	5A	133*76*45
ARI-PR-RP-12-100	AC 176 - 264V	8.33A	143*76*45
ARI-PR-RP-12-150	AC 176 - 264V	12.5A	164*76*45
ARI-PR-RP-12-200	AC 176 - 264V	16.66A	173*76*45
ARI-PR-RP-12-300	AC 176 - 264V	25A	182*120*56
ARI-PR-RP-12-400	AC 176 - 264V	33A	184*112*57



# ARIHANT LED INDOOR SLIM SMPS



## FEATURES :

- **Constant Voltage Indoor Slim Design**
- Accord with **IP20 (60W to 400W)** for Indoor Installation
- **Suitable for LED lighting and moving sign applications**
- Aluminum Extrusion Case, Excellent heat-dissipating, High reliability.
- Protections: Over Load / Short circuit / Over Temperature
- 100% full load burn-in test
- **2 years warranty**

IS 13252:2010  
(Part-1/Sec-13)



R-41256870

## TECHNICAL DETAIL

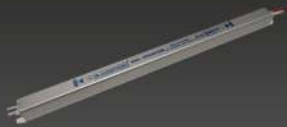
- AC input voltage range: **176-264VAC**
- Input frequency: 47-63Hz
- AC inrush current: Cold start, 60A / 230VAC
- Line regulation ( full load ) : \*2%
- Output over load protection: Hiccup mode, auto-recovery
- Working temperature: -20~+60°C
- Storage temperature: +40~85°C
- Safety standards: GB4943. EN60950-1
- EMC standards: GB9254. EN55022 class A
- Cooling method: Free air convection cooling

## TECHNICAL SPECIFICATION

Model No.	Input Voltage	Output Current	Dimension (mm)
ARI-SLIM-NWP-12-60	AC 176 - 264V	5A	180*53*20
ARI-SLIM-NWP-12-100	AC 176 - 264V	8.3A	180*53*20
ARI-SLIM-NWP-12-150	AC 176 - 264V	12.5A	235*53*20
ARI-SLIM-NWP-12-200	AC 176 - 264V	16.7A	306*53*22
ARI-SLIM-NWP-12-300	AC 176 - 264V	25A	306*53*22
ARI-SLIM-NWP-12-400	AC 176 - 264V	33.3A	306*53*22



# ARIHANTLED ADAPTOR & CONTROLLER SERIES



ULTRA SLIM SMPS  
ARI-UL-SLIM-NWP-12-60



LED ADAPTOR  
ARI-ADP-12-60



ARI DC 12V - 144W

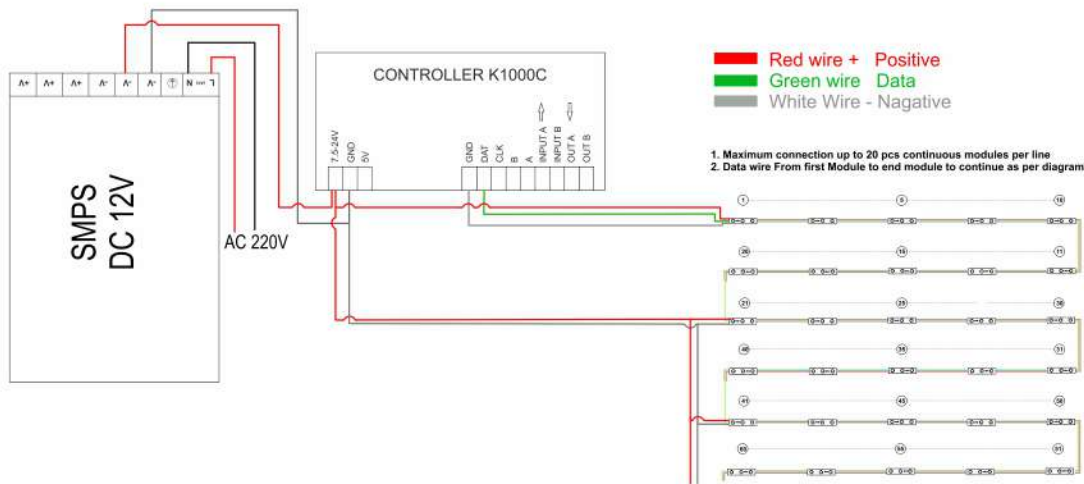


ARI DC 12V - 360W



K - 1000 C

## FULL COLOR WIRING DIAGRAM



## TECHNICAL SPECIFICATION

Model	Input Voltage	Output Voltage	IP Grade
ARI-UL-SLIM-NWP-60-12	AC 180V - 260V	DC 12V	IP 20
ARI-ADP-12-24	AC 100V - 280V	DC 12V	IP 20
ARI-ADP-12-36	AC 100V - 280V	DC 12V	IP 20
ARI-ADP-12-60	AC 100V - 280V	DC 12V	IP 20
ARI DC 12V - 144W	DC 12V	DC 12V	IP 20
ARI DC 12V - 360W	DC 12V	DC 12V	IP 20
K - 1000 C	DC 5V - 24V	DC 5V - 24V	IP 20



## SINGLE CORE/ MULTI STRAND

### TECHNICAL DATA :

- Voltage Grade : Up to and including 1100V. Specifications according to class 5
- Conductor : Thin strands of electrolytic copper are multi-drawn for uniformity of resistance, dimension and flexibility. The strands are twisted with high precision to impart circularity for the conductor.
- Approvals : IS 694 marked.
- Colours : Red & Black (colours available as per orders)
- Marking : The cables are printed with marking of 'FR-LSH' from 1 Sq. mm to 6 Sq. mm & "ARI-CAB" for all other sizes. The wires also comes with accurate meter marking on each meter '01 MTR....02 MTR...' & so on, on all other sizes.
- Insulation: Specially formulated FLAME RETARDANT PVC insulation is used. The FR property retards the propagation of flame without compromising safety.
- Packing : 90 mtr. coil is packed in protective cartons upto size 6 Sq. mm

### TECHNICAL SPECIFICATION

Size	Nominal Insu. Thickness	Number Nominal Dia. of Strands	Conductor Resistance At 20 OC (Ω/km)	Current Rating	
				Casing	Concealed
0.75 mm	0.75 mm	24/0.2	25.76	9	8
1.0 mm	1.0 mm	32/0.2	19.29	14	13
1.5 mm	1.5 mm	30/0.25	12.8	18	16
2.5 mm	2.5 mm	50/0.25	7.78	24	20
4.0 mm	4.0 mm	56/0.3	4.95	30	26
6.0 mm	6.0 mm	84/0.3	3.3	38	33

### APPLICATION :

Suitable for wiring in all types of residential and commercial infrastructure, where fire and electrical safety is utmost important.

## MULTI CORE ROUND FLEXIBLE

### TECHNICAL DATA :

- Approvals : IS 694 marked
- Conductor : Electrolytic grade copper Class 5 as per IS 8130 Standard
- Cable Colour : All colours Available Insulation colour: Red and Black
- Voltage Rating : Up to and including 1100V
- Packing : Standard packing of 100 mtr. in coil. Longer length available on request

### APPLICATION :

These cables are designed for residential and commercial infrastructure. They serve as the connecting medium in power and control panels, cabinets & switchgears. They can also used for the purposes such as stationary and static appliances, motors and for other single phase connections. ARI-CAB F.C PVC insulated & sheathed multicore cables suitable for all general purpose wirings for max. operating temperature of 70°C

### TECHNICAL SPECIFICATION

Number of Cores	Nominal Cross Sectional Area (Sq. mm)	Nominal Insulation Thickness (mm)	Max D.C. Conductor Resistance At 20 OC (Ω/km)	Nominal Thickness of Sheath	Max. Overall Dimension (mm)
1	1	0.6	19.5	0.9	4.7
2	1	0.6	19.5	0.9	7.6
3	1	0.6	19.5	0.9	8.1
4	1	0.6	19.5	0.9	8.8
1	1.5	0.6	13.3	0.9	5.4
2	1.5	0.6	13.3	0.9	8.9
3	1.5	0.6	13.3	0.9	9.4
4	1.5	0.6	13.3	0.9	10.4
1	2.5	0.7	7.98	0.9	6.2
2	2.5	0.7	7.98	0.9	10.3
3	2.5	0.7	7.98	0.9	10.9
4	2.5	0.7	7.98	0.9	12
1	4	0.8	4.95	0.9	6.8
2	4	0.8	4.95	0.9	11.6
3	4	0.8	4.95	0.9	12.4
4	4	0.8	4.95	0.9	13.6



# ARIHANT LED VIDEO WALL (INDOOR)

**Arihant LED**®



## FEATURES :

- High Brightness & Contrast: LED screens provide superior visibility, even in direct sunlight, with excellent contrast ratios for vibrant, sharp visuals.
- Energy Efficiency & Durability: LEDs consume less power, generate less heat, and often utilize common cathode designs to reduce energy waste.
- Long Lifespan: Indoor LED displays are designed to last between 80,000 and 100,000 hours.
- High Refresh Rates: Professional screens feature high refresh rates (typically 1920Hz to over 3840Hz), essential for smooth video playback without flickering, ideal for studios.
- Versatile Applications & Flexibility: Available in flat, curved, or transparent designs, as well as foldable, portable options.
- Easy Maintenance: Many models feature modular designs that allow for front-side maintenance, enabling quick hot-swapping of modules without shutting down the entire display.

## COMMON TECHNICAL SPECIFICATIONS :

- Pixel Pitch: Ranges from fine pitch (<2mm) for close viewing to larger pitches for outdoor, long-distance viewing.
- Viewing Angles: Offer wide viewing angles with minimal color shift.
- Operating Temperature: Engineered to operate in varied conditions, typically from -20C to +55C for outdoor units.

## TECHNICAL SPECIFICATION

### Indoor full-color module parameters 320 \* 160mm

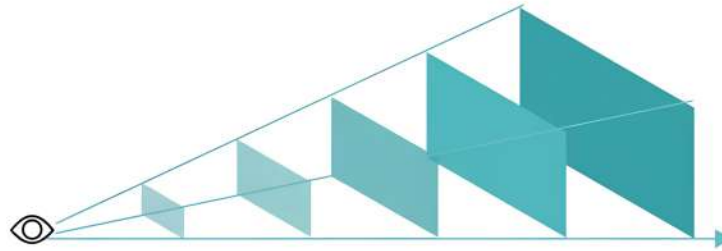
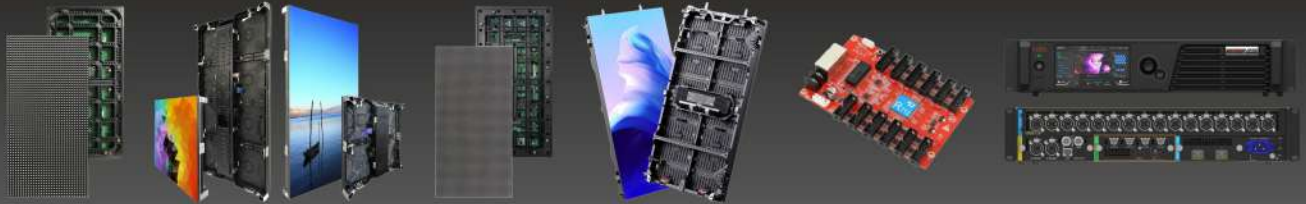
Product Name	P1.25	P1.538	P1.667	P1.86	P2	P2.5	P3.076	P4	P5
Physical density (dot/m <sup>2</sup> )	640000	422500	360000	288906	250000	160000	105625	62500	40000
Pixel configuration	1R1G1B	1R1G1B	1R1G1B	1R1G1B	1R1G1B	1R1G1B	1R1G1B	1R1G1B	1R1G1B
Pixel resolution (dots)	256×128	208×104	192×96	172×86	160×80	128×64	104×52	80×40	64×32
Module size (mm)	320×160	320×160	320×160	320×160	320×160	320×160	320×160	320×160	320×160
LED Lamp	SMD1010	SMD1212	SMD1212	SMD1515	SMD1515	SMD1515 / SMD2020	SMD2020	SMD2020	SMD2020
Drive type	Constant current	Constant current	Constant current	Constant current	Constant current	Constant current	Constant current	Constant current	Constant current
Scan mode	64s	52s	64s	43s	40s	32s	26s	20s	16s
Port type	75E	75E	75E	75E	75E	75E	75E	75E	75E
Brightness (cd/m <sup>2</sup> )	550	700-800	600	650-700	800	700-800	650	630	480-500
Current (A)	5.5A	5.5A	5.5A	5.5A	5A	5A	4A	4A	3A
Module power (W)	27.5	27.5	27.5	27.5	25	25	20	20	15
Cabinet size (mm)	640×480	640×480	640×480	640×480	640×480	640×480	640×480	960×960	960×960
Pixel per cabinet (dots)	512×384	416×312	384×288	344×258	320×240	256×192	312×312	240×240	192×192
Working Input voltage	220V AC ±15%	220V AC ±15%	220V AC ±15%	220V AC ±15%	220V AC ±15%	220V AC ±15%	220V AC ±15%	220V AC ±15%	220V AC ±15%
Best viewing distance (m)	1.3-45 m	1.6-45 m	1.7-45 m	1.9-45 m	2-45 m	3-45 m	3-45 m	4-45 m	5-45 m

\*other sizes, pixels & components available upon request



# ARIHANT LED VIDEO WALL (OUTDOOR)

**Arihant LED**<sup>®</sup>



Optimal viewing distance    2-3 meters    4-6 meters    10-15 meters    20-30 meters    80-100 meters

Pixel Pitch    P1    P2    P5    P8    P10

## COMMON TECHNICAL SPECIFICATIONS :

- Pixel Pitch: Ranges from fine pitch (<2mm) for close viewing to larger pitches for outdoor, long-distance viewing.
- Viewing Angles: Offer wide viewing angles with minimal color shift.
- Operating Temperature: Engineered to operate in varied conditions, typically from -20C to +55C for outdoor units.

## TECHNICAL SPECIFICATION

### Outdoor full-color module parameters 320 \* 160mm

Product Name	P2.5	P3.076	P4	P5	P6.67	P8	P10
Physical density (dot/m <sup>2</sup> )	160000	105625	62500	40000	22500	15625	10000
Pixel configuration	1R1G1B	1R1G1B	1R1G1B	1R1G1B	1R1G1B	1R1G1B	1R1G1B
Pixel resolution (dots)	128×64	104×52	80×40	64×32	48×24	40×20	32×16
Module size (mm)	320×160	320×160	320×160	320×160	320×160	320×160	320×160
LED Lamp	SMD1415	SMD1415	SMD1921	SMD2727/SMD1921	SMD3535	SMD3535/SMD2727	SMD3535/SMD2727
Drive type	Constant current	Constant current	Constant current	Constant current	Constant current	Constant current	Constant current
Scan mode	16s	13s	10s	8s	6s	5s	2s / 4s
Port type	75E	75E	75E	75E	75E	75E	75E
Brightness (cd/m <sup>2</sup> )	4500	4500	4500	4500	5000	4500	2s: 4500-5000 4s: 3500-4500
Current (A)	8A	7A	7.2A	7A	7A	7A	2s: 8A / 4s: 7A
Module power (W)	40	35	36	35	35	35	2s: 40 / 4s: 35
Cabinet size (mm)	640×480	960×960	960×960	960×960	960×960	960×960	960×960
Pixel per cabinet (dot)	256×192	312×312	240×240	192×192	144×144	120×120	96×96
Working Input voltage	220V AC ±15%	220V AC ±15%	220V AC ±15%	220V AC ±15%	220V AC ±15%	220V AC ±15%	220V AC ±15%
Best viewing distance	2.5-45m	3-45m	4-45m	5-45m	7-45m	8-45m	10-45m

\*other sizes, pixels & components available upon request



# ARIHANT LED ALLUMINIUM CHANNEL ROLL

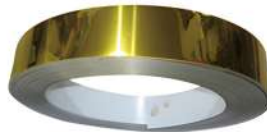
**Arihant LED**<sup>®</sup>

## FEATURES :

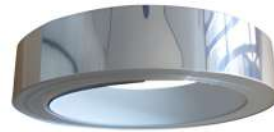
- Thickness : 0.6mm, 0.8mm, 1mm
- Size : DF - 60mm, 80mm, 100mm  
Flat - 40mm, 50mm, 60mm, 70mm, 80mm, 100mm
- Color : All solid Colors Brush Gold, Brush Silver, Brush Mirror Gold, Mirror Silver, Mirror Rose



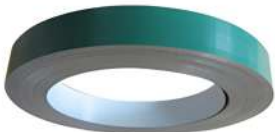
Brush Rose



Mirror Gold



Mirror Silver



Green



Brush Gold



Brush Silver



Red



Aluminum



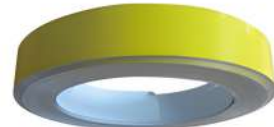
Blue



Black



White



Yellow



# COMPANY EXHIBITIONS



MUMBAI - 2022



MUMBAI - 2019



NEW DELHI - 2019



MUMBAI - 2018



NEW DELHI-2017



NEW DELHI - 2015



FESPA-2024 , Amsterdam, Netherlands



FESPA-2025, Berlin, Germany



MUMBAI - 2014



NEW DELHI - 2013



CHENNAI - 2018



KOLKATA - 2019



# Arihant



UNIGLOBE PVT. LTD.

## Arihant LED®

### HEAD OFFICE - SURAT

# 2/719, "Arihant House", Hira Modi Street Corner, Sagrapura, Near Udhna Darwaja, Ring Road, Surat- 395002, Gujarat. INDIA  
CONTACT : +91 99252 30751 / 55 Email : ho.surat@arihantled.in / support@arihantled.in

### AHMEDABAD

C-1/2/3, Ground Floor, Sumel-9, Dudheshwar BRTS Road, Shahibaug,  
Ahmedabad - 380004, Gujarat, INDIA  
CONTACT : +91 82380 84760 / 61 / 62 / 63 / 64 Tel. +91-79-40043676  
Email : ahmedabad@arihantled.in

### KOLKATA

4, Khairu Place, Near Chandni Chowk Metro Station,  
Kolkata-700072, INDIA.  
CONTACT :- +91 83358 29991 / 92 / 93 Tel. +91 033-46011297  
Email : kolkata@arihantled.in

### BANGALORE

# 71 & 72, Arihant House, Near Santoshi Maa Temple, Kilari Road,  
Bangalore - 560053, Karnataka, INDIA.  
CONTACT : +91 88844 55862 / 63 / 64 / 65, 8884455265 Tel. +91-80- 41152097  
Email : bangalore@arihantled.in

### MUMBAI

Shop No. 2, Yogi Industrial Estate, Opp. Ram Ashirwad Building No. 3, Ram Mandir Road,  
Near Ram Mandir Station, Goregaon(W) Mumbai - 400104, Maharashtra, INDIA.  
CONTACT : +91 88796 64911 / 12 / 13 / 14 / 16 / 18 Tel. +91-22-40166300  
Email : mumbai@arihantled.in

### CHENNAI

#24/49, Ground Floor, Unnis Ali Street, Ellis Road, Chennai-600002,  
Tamilnadu, INDIA.  
CONTACT : +91 78239 99791 / 92 / 93 Tel. +91-44-48543676  
Email : chennai@arihantled.in

### NEW DELHI

#2204/3, Ground Floor, Street No. 3, Rajguru Road, Chuna Mandi, Pahar Ganj,  
New Delhi - 110055 INDIA.  
CONTACT : +91 85888 35201 / 02 / 03, 85888 78078 Tel. +91-11-41425507  
Email : delhi@arihantled.in

### COCHIN

# 67/291, (41/2694 H), 2nd Floor, Dr. Kartha Complex, Paramara Road,  
Cochin, INDIA.  
CONTACT : +91 75938 40701 / 02 / 03 / 04 / 05 Tel. +91-484-4013676  
Email : cochin@arihantled.in

### PUNE

1921/23, Shop No. 2, Nr. Bhikardas Maruti Mandir, B/h. Maharana Pratap Udyan,  
Opp. Bajirao Road Telephone Exchange, Pune-411030, Maharashtra, INDIA.  
CONTACT : +91 84118 84361 / 62 / 63 / 64 / 65 Tel. +91-20-29523676  
Email : pune@arihantled.in

### HYDERABAD

Shop No. 6, Ground Floor, Balaji Complex,  
Ramkoti, Hyderabad-500001, Telangana, INDIA.  
CONTACT : +91 88866 09373 / 74 / 75 / 76 Tel. +91-40-49538377  
Email : hyderabad@arihantled.in

### SURAT

4, Narayan Darshan, Opp. Rupam Cinema, Salabatpura,  
Surat-395003, Gujarat, INDIA.  
CONTACT : +91 99252 30756 / 57 / 59 Tel. +91-261-2343676, 77  
Email : arihantraders.surat@yahoo.com

### INDORE

Shop No.4, Vasundhara Complex, Near New Siyaganj,  
Mal Godown Road, Indore - 452007, Madhya Pradesh, INDIA  
CONTACT : +91 9109106191 / 92 / 93 / 94 Tel. +91-731-4964513  
Email : indore@arihantled.in

### USA

USA TRADING LLC - 2 Brighton Ave. Unit 1, PASSAIC, NJ - 07055 USA  
CONTACT : +1 973 752 7411  
Email : arihantled.usa@gmail.com

 [www.arihantled.in](http://www.arihantled.in)

